

如何解读水费单

大西区水务局为您设计了能够轻松理解的水费单。

水费单首页上有个人信息、账单金额、付款到期日等重要信息。

您的详细信息

您的10位账户号码、地址、账单编号及账单日期。

上张账单

上张账单金额。

已缴费金额

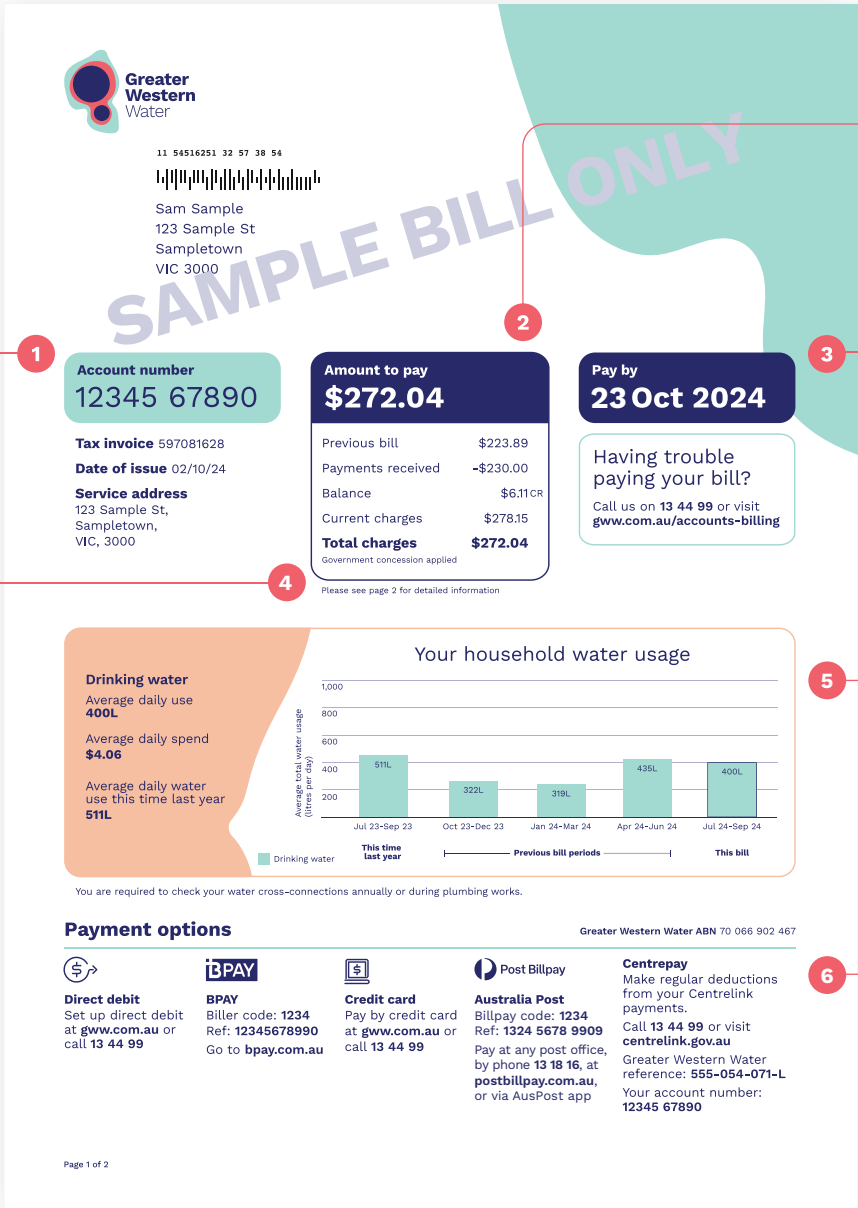
上张账单已付金额。

余额

上张账单欠费金额。如果您账户内有多余金额，将会在金额旁边显示“CR”。总收费金额会扣除这笔多余金额。

当前需缴纳金额

本账单欠款额。该金额须在“支付截止日期”前支付。



待付金额

您的账户总欠款额。这包括当前账单的金额以及任何之前的账单未结清的欠款。

付款到期日

本账单当前费用的付款截止日期。之前账单的金额应在对应账单的“付款截止日期”前支付。

家庭用水量

该表格列出了本次账单期的用水量，并将其与此前账单期的用水量进行对比。这样可以清晰比较用水量。

支付方式

多种方式支付账单一目了然。如果无法一次性支付全部账单，您也可以随时部分支付。

如何解读水费单

账单第二页有关于用量和收费的详情。

用量及收费

本账单及上一期账单的详细用水量 and 费用，包括水表编号及管网费用。服务费用按预付款方式收取，而其他费用则为最近一个计费周期的费用。

有关定价及收费的更多信息，请浏览：
gww.com.au/charges

6 Usage and charges

Outstanding balance \$6.11CR

Your water usage ¹

Meter no.	Bill days	Previous read	Current read	Usage kL	Rate \$/kL	Amount
MAF342343	86	1522	1548 (E)	38.000		
Meter read date: 30/09/24						

Water consumed						
Usage Step 1 (01/04/24 to 30/06/24)				26.000	\$2.0967	\$54.51
Usage Step 2 (01/04/24 to 30/06/24)				14.000	\$2.3071	\$32.30
Total water consumed				40.000		\$86.81

Sewage disposal						
01/04/24 to 30/06/24				28.39	\$0.7647	\$21.71
Total usage						\$108.52

Your network charges ²

	Size	Charge period	Amount
Water	20mm	01/07/24 - 30/09/24	\$51.49
Sewerage		01/07/24 - 30/09/24	\$55.08
Total network charges			\$106.57

Other charges and adjustments

	Charge period	Net annual value (NAV)	Rate in NAV \$	Minimum	Charge (\$)
Waterways ³	01/07/24 - 30/09/24				\$26.39
For Melbourne Water					
Parks charge ⁴	01/07/24 - 30/09/24	\$5.831	0.004860	\$81.60	\$81.60
Pensioner concession					\$44.93
Total other charges and adjustments					\$63.06

Your total charges \$278.15

(E) This is an estimated reading because we could not access your meter.

Privacy Policy
Greater Western Water actively complies with the Privacy and Data Protection Act (Vic) 2014 and is committed to protecting the privacy and personal information of our customers. Access our Privacy Policy at gww.com.au/privacy or email contact@gww.com.au to update the personal information you have supplied to us.

7 Your charges explained

1. 1 Kilo litre (kL) = 1000 Litre (L)

Water usage calculation
Step 1: 0 to 440 litres per day
Step 2: 441 to 880 litres per day
Step 3: Over 880 litres per day

Recycled water is calculated on the amount of Class A water you use.

2. Water and sewerage **network charges** help us maintain and upgrade thousands of kilometres of water and sewer pipes.

3. The **waterways charge** helps Melbourne Water to keep our drinking water healthy and protected.

4. The **parks charge** supports Parks Victoria to look after Melbourne's major parks, gardens, trails and zoos.

For more information visit gww.com.au/charges

8 We're here to help

13 44 99

Enquiries and support
(8.30am to 5pm,
Monday to Friday)
Faults and emergencies
(24 hours)

03 9313 8989
Support in other languages

13 36 72
Relay service

收费项目详细说明

本部分为表格中的每项收费提供详细说明。详细说明内容及表格每部分均有数字标号，帮助您找到所需信息。

我们将竭诚为您提供帮助

如果您就账单支付有任何问题或需要支持，可通过以下方式联系我们。您也可以从这里获取有关我们帮助支持服务的不同语言版本信息，以及全国转接服务(National Relay Service) 详情。

更多信息，请浏览：
gww.com.au/yourbill